



# Santech Asia Co., Ltd

Corporate profile(Thailand)

## Corporate profile

Company name	Santech Asia Co., Ltd
Representative	長網 純也
Office	13th Fl. Bisco Tower Building
Capital	2,000,000THB
Staff	8 person (JP 1person)
Description of Business	Design (JIG, C/F ect)

## Company history

Aug,2015	Opening Office at BangChak
Oct,2015	Established Santech Asia Co., Ltd
Jul,2017	Moved to Ekkamai
Jul,2019	Moved to BangRak

## CAD

No	System	machine
1	CADMEISTER	6Unit(s)

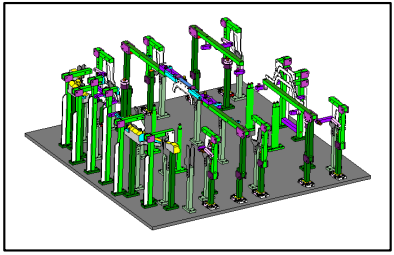
## Map

56/16 13th Fl. Bisco Tower Building.,  
Sup Rd.,Siphaya, Bangrak, Bangkok ,Thailand 10500

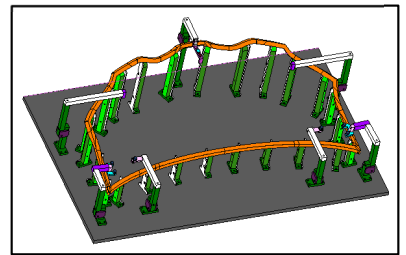


## Contents of business ① 「S/A JIG for spot welding, JIG for processing metal plate」

S/A JIG for spot welding

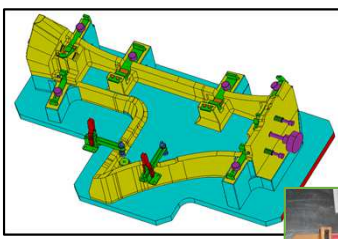


JIG for processing metal plate

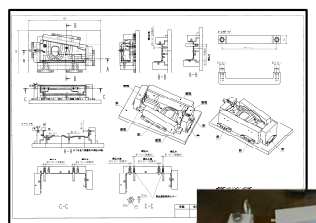


## Contents of business ② 「C/F」

OR C/F

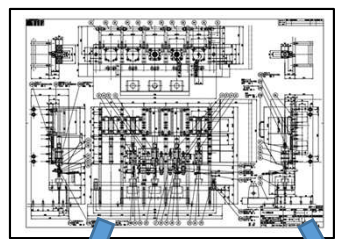


OW C/F

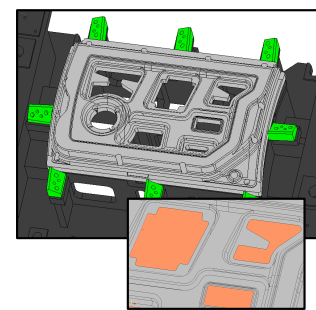


## Contents of business ③ 「Etc.」

CADtrace



CAD modeling(3D)



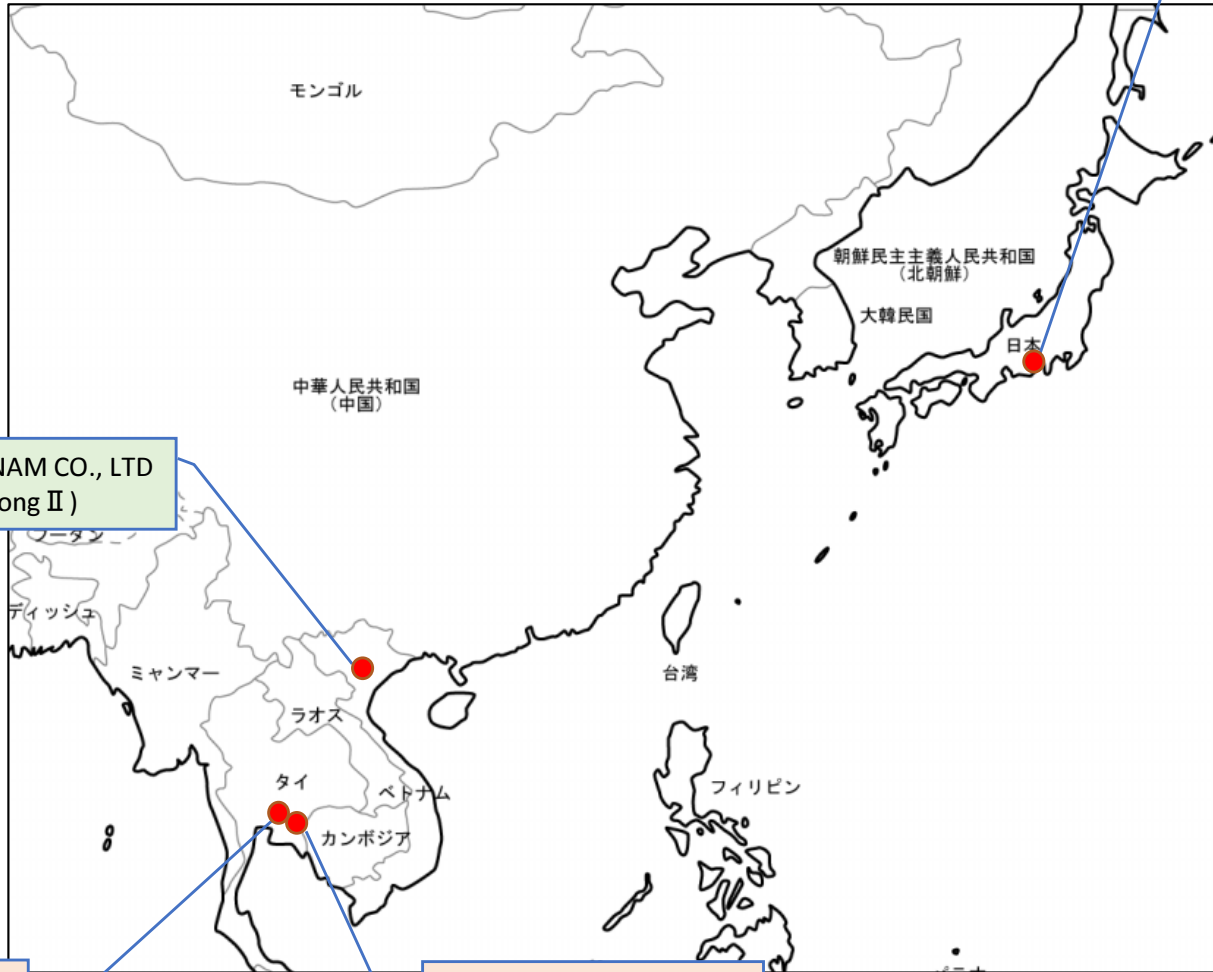
Modified Solid by 3D Modeling and surface create

Design School





# Sanwa Group の拠点



エス・エヌ・ビー  
(愛知県知立市)



SANWA INDUSTRY 小原工場  
(愛知県豊田市)



SANWA INDUSTRY カズエ工場  
(愛知県豊田市)



SANWA INDUSTRY 知立工場  
(愛知県知立市)



福井鉄工所  
(岐阜県大垣市)



SANWA INDUSTRY VIETNAM CO., LTD  
(Vietnam/Thang Long II)



SANTECH ASIA CO., LTD  
(Thailand/BangRak)



AWS Machinery CO., LTD  
(Thailand/Samut Prakan)

